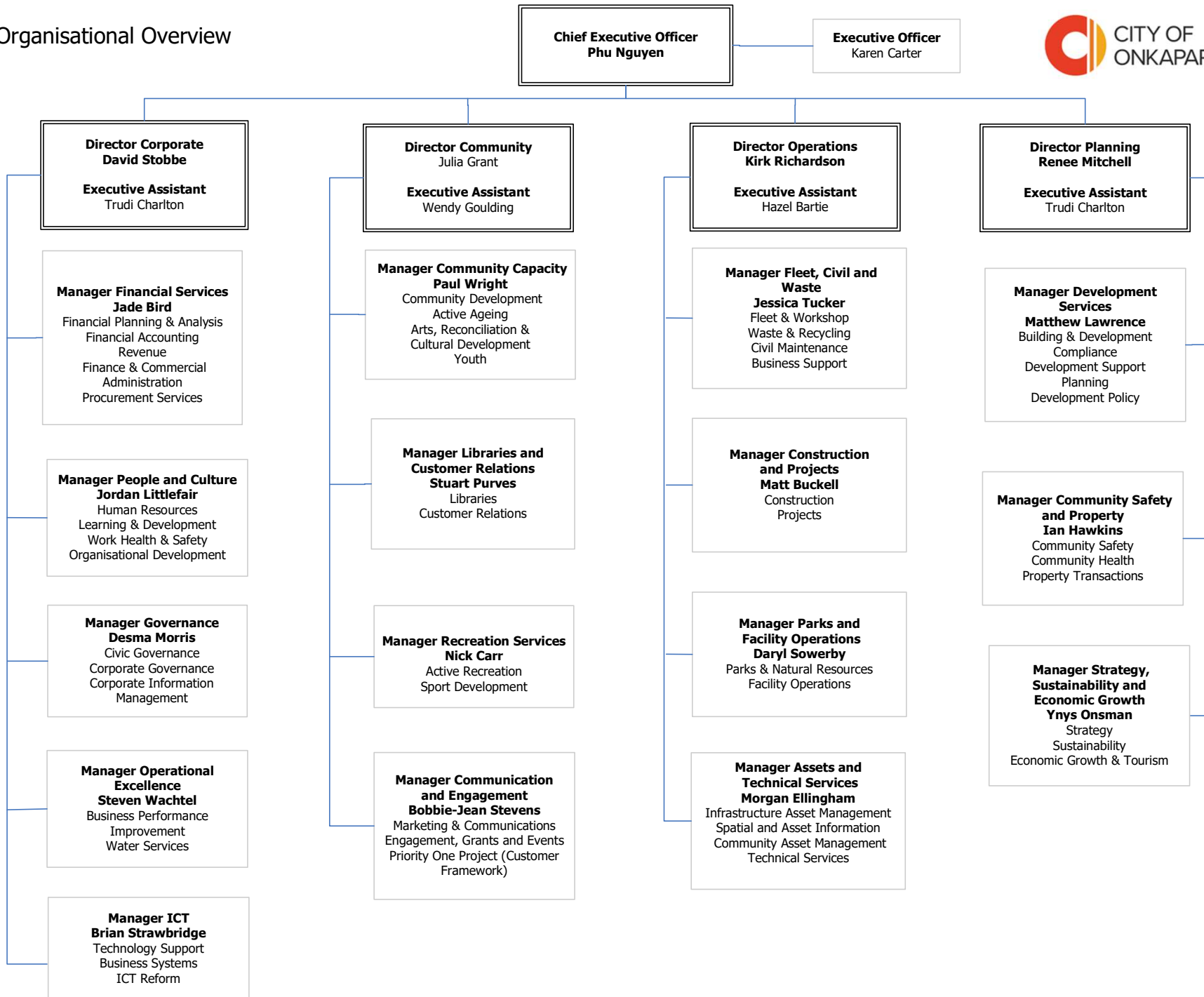


Organisational Overview



Director Corporate
David Stobbe

Executive Assistant
Trudi Charlton

Manager Financial Services
Jade Bird
Financial Planning & Analysis
Financial Accounting
Revenue
Finance & Commercial
Administration
Procurement Services

Manager People and Culture
Jordan Littlefair
Human Resources
Learning & Development
Work Health & Safety
Organisational Development

Manager Governance
Desma Morris
Civic Governance
Corporate Governance
Corporate Information
Management

Manager Operational Excellence
Steven Wachtel
Business Performance
Improvement
Water Services

Manager ICT
Brian Strawbridge
Technology Support
Business Systems
ICT Reform

Director Community
Julia Grant

Executive Assistant
Wendy Goulding

Manager Community Capacity
Paul Wright
Community Development
Active Ageing
Arts, Reconciliation &
Cultural Development
Youth

Manager Libraries and Customer Relations
Stuart Purves
Libraries
Customer Relations

Manager Recreation Services
Nick Carr
Active Recreation
Sport Development

Manager Communication and Engagement
Bobbie-Jean Stevens
Marketing & Communications
Engagement, Grants and Events
Priority One Project (Customer Framework)

Director Operations
Kirk Richardson

Executive Assistant
Hazel Bartie

Manager Fleet, Civil and Waste
Jessica Tucker
Fleet & Workshop
Waste & Recycling
Civil Maintenance
Business Support

Manager Construction and Projects
Matt Buckell
Construction
Projects

Manager Parks and Facility Operations
Daryl Sowerby
Parks & Natural Resources
Facility Operations

Manager Assets and Technical Services
Morgan Ellingham
Infrastructure Asset Management
Spatial and Asset Information
Community Asset Management
Technical Services

Director Planning
Renee Mitchell

Executive Assistant
Trudi Charlton

Manager Development Services
Matthew Lawrence
Building & Development
Compliance
Development Support
Planning
Development Policy

Manager Community Safety and Property
Ian Hawkins
Community Safety
Community Health
Property Transactions

Manager Strategy, Sustainability and Economic Growth
Ynys Onsman
Strategy
Sustainability
Economic Growth & Tourism